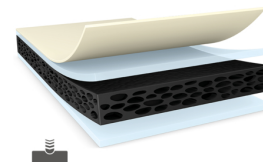




tesa® 62626

Product Information



300µm double sided black high performance foam tape

Product Features

- Thickness: 300µm
- Very high bonding strength
- Highly conformable foam backing provides excellent shock resistance
- Superior push out resistance due to strong high performance adhesive
- Good sealing function versus humidity and dust
- Waterproofness

tesa® 62626 is a black double sided thin foam tape. The tape is equipped with a tackified acrylic adhesive.

Application Fields

- Touch panel mounting
- Lens mounting in mobile phones
- LCD cover / front panel mounting in notebooks
- Mounting on uneven surfaces and rough surfaces

Product Construction

- | | | | |
|--------------------|-------------------|----------------------|---------|
| • Type of adhesive | tackified acrylic | • Thickness of liner | 50 µm |
| • Type of liner | PET | • Backing material | PE foam |
| • Total thickness | 300 µm | • Color | black |

Product Properties/Performance Values

- | | | | |
|-----------------------|----------|-------------------------------------|-------|
| • Elongation at break | 340 % | • Temperature resistance long term | 80 °C |
| • Tensile strength | 6.7 N/cm | • Temperature resistance short term | 90 °C |

Adhesion to Values

- | | | | |
|-----------------------------|-----------|-------------------------|---------|
| • Steel (initial) | 13 N/cm | • PC (initial) | 15 N/cm |
| • PC (after 14 days) | 16 N/cm | • Glass (after 14 days) | 16 N/cm |
| • PMMA (after 14 days) | 16 N/cm | • Glass (initial) | 15 N/cm |
| • ABS (initial) | 12 N/cm | • PMMA (initial) | 15 N/cm |
| • ABS (after 14 days) | 15.5 N/cm | • Aluminium (initial) | 12 N/cm |
| • Aluminium (after 14 days) | 14.5 N/cm | • Steel (after 14 days) | 16 N/cm |

For latest information on this product please visit <http://l.tesa.com/?ip=62626>



tesa® 62626

Product Information

Disclaimer

tesa® products prove their impressive quality day in, day out in demanding conditions and are regularly subjected to strict controls. All information and recommendations are provided to the best of our knowledge on the basis of our practical experience. Nevertheless tesa SE can make no warranties, express or implied, including, but not limited to any implied warranty of merchantability or fitness for a particular purpose. Therefore, the user is responsible for determining whether the tesa® product is fit for a particular purpose and suitable for the user's method of application. If you are in any doubt, our technical support staff will be glad to support you.



For latest information on this product please visit
<http://l.tesa.com/?ip=62626>